

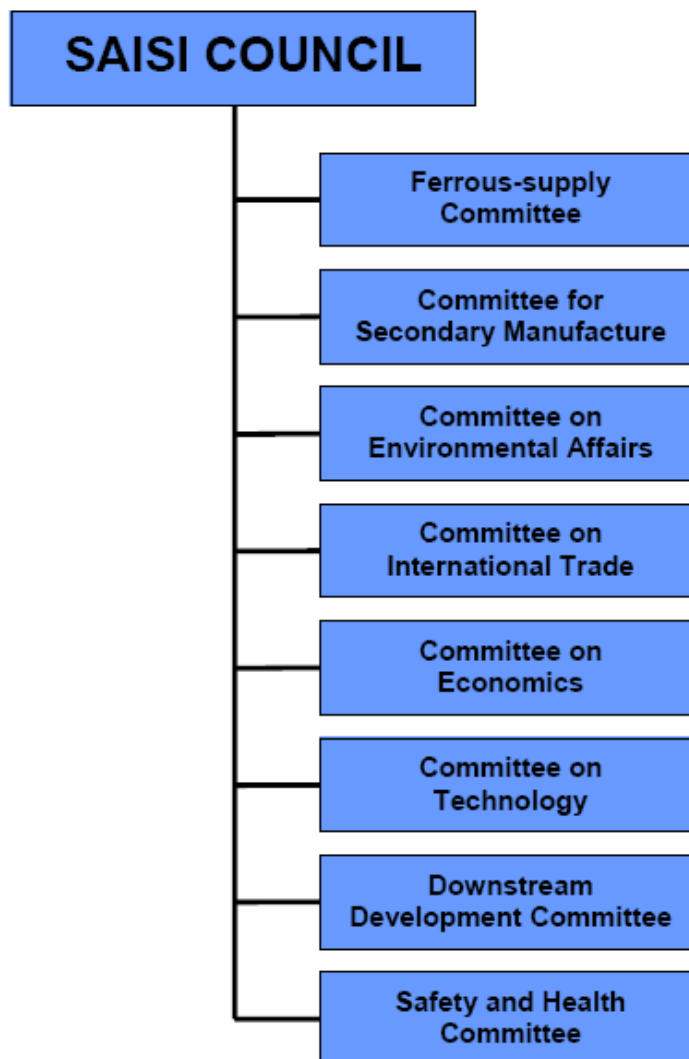


SOUTH AFRICAN IRON AND STEEL INSTITUTE

SAISI STRUCTURE

STRUCTURE

Organisational structure of the South African Iron and Steel Institute



SAISI's Council provides strategic direction and approves policy and the annual operating budget of the secretariat. SAISI's chairperson is elected for a two-year term by the members of Council comprised of the chief executives and nominated members of SAISI's six member companies.

SAISI functions by means of interaction between representatives of SAISI's member companies within structured council and committee meetings with the support of the secretariat. SAISI's members are committed to a code prohibiting anti-competitive behaviour. The committees are supported by the secretariat to deal with matters of common interest.